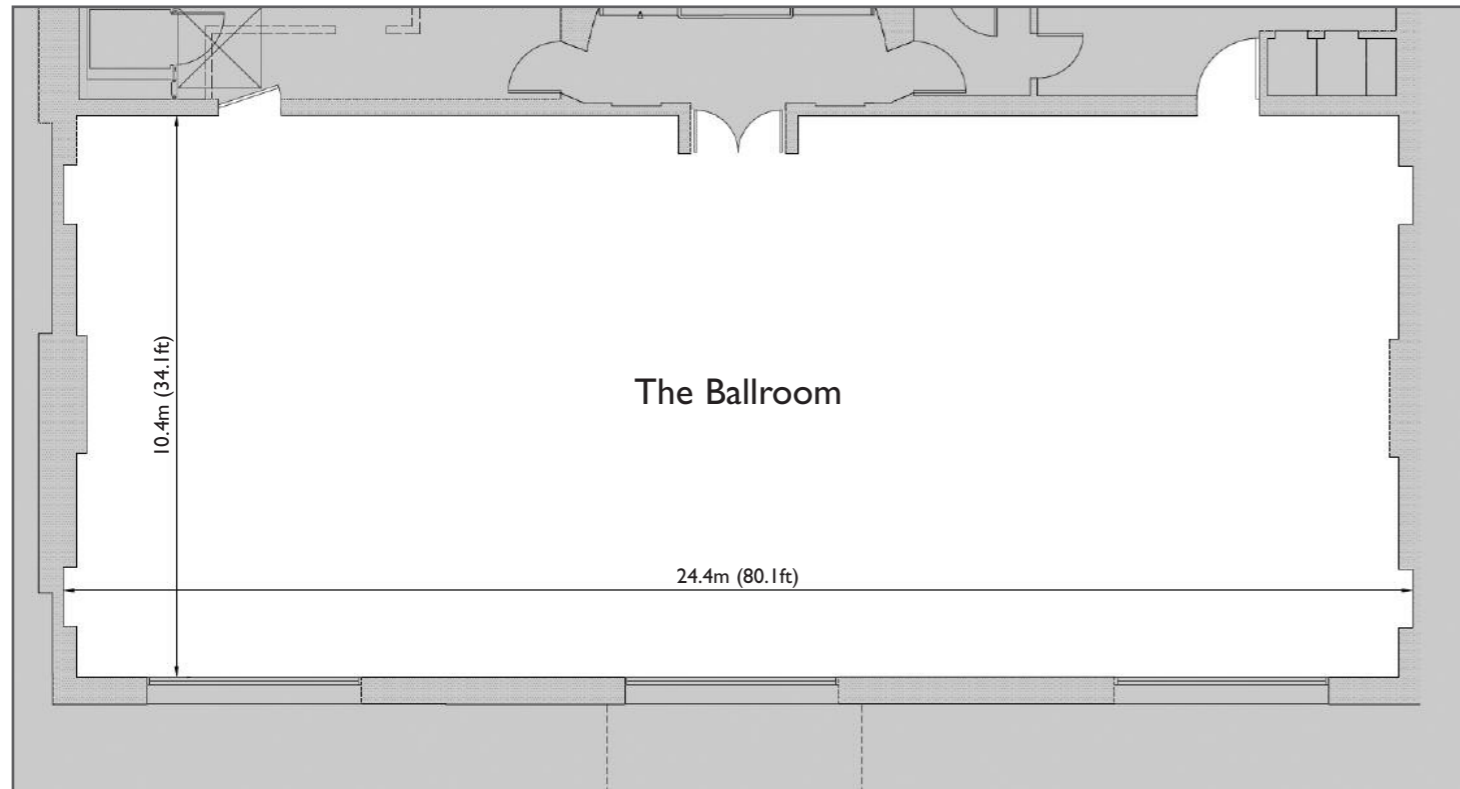


# Floor Plans



## The Ballroom Facilities

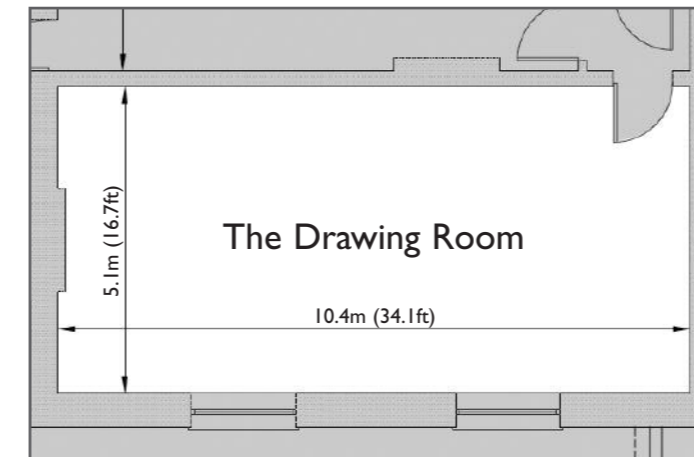
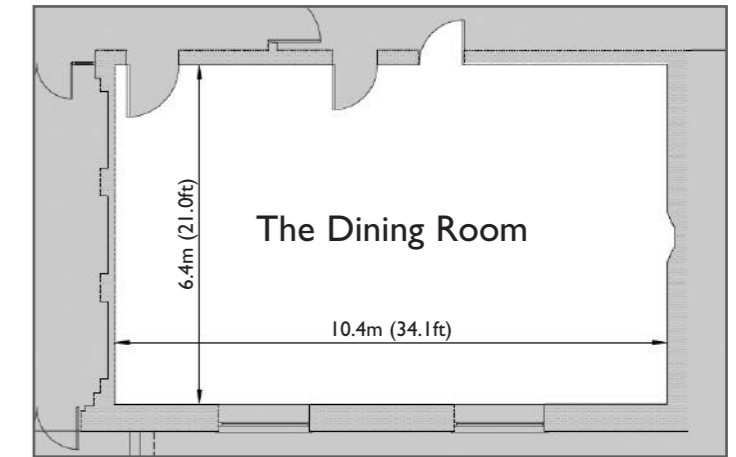
The room is flooded with natural daylight, with curtains at the windows to allow almost complete black out, sixteen electrical sockets, internet access and a 32 amp electrical supply.

Dimensions	Capacities
Length 10.4m (34.1ft)	Theatre 200
Width 24.4m (80.1ft)	Boardroom / U Shape Not suitable
Area 252.7m <sup>2</sup>	Cabaret 140 (plus up to 9 on top table)
Height 8m	Dinner 200

## The Dining Room Facilities

The room has an in-built sound system, internet access, natural daylight, shutters on the windows to allow almost complete black out and eight electrical sockets.

Dimensions	Capacities
Length 10.4m	Theatre 70
Width 6.4m	Boardroom 32
Area 66.5m <sup>2</sup>	Cabaret 49 (plus up to 6 on top table)
Height 3.2m	U shape 26
	Dinner 70



## The Drawing Room Facilities

The room has an in-built sound system, internet access, natural daylight, shutters on the windows to allow almost complete black out and six electrical sockets.

Dimensions	Capacities
Length 10.4m	Theatre 60
Width 5.1m	Boardroom 30
Area 53.0m <sup>2</sup>	Cabaret 42 (plus up to 6 on top table)
Height 3.2m	U shape 26
	Dinner 60

## The Lord Mayor's Room Facilities

The room has an in-built sound system, internet access, natural daylight and six electrical sockets.

Dimensions	Capacities
Length 8.6m	Theatre 48
Width 5.0m	Boardroom 24
Area 43.0m <sup>2</sup>	Cabaret 42 (plus up to 6 on top table)
Height 3.2m	U shape 23
	Dinner 50

